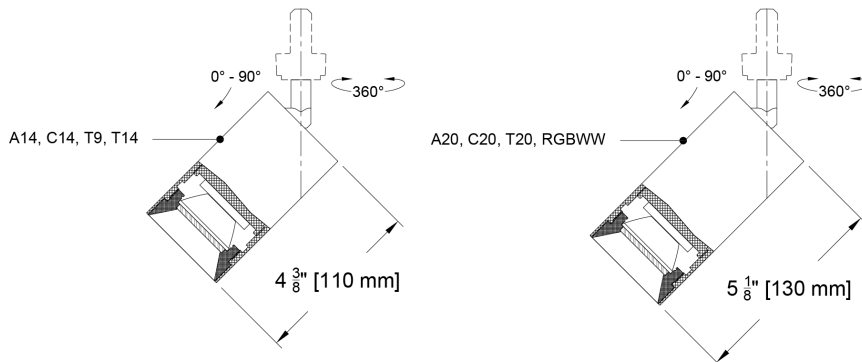


## The Yashar Family

Welcome to the Yashar Mains Scope track accent light, for use with our Mains track. The accent light, a derivative of the Scope Original Monopoint, features integral drivers mounted in the track adaptor. Available driver types include 0-10 volt, DMX, DALI-2 and phase dimming options. Sources include static white LEDs in a variety of color temperatures, as well as our proprietary Ambient Dim™ chips, & Tunable White. In addition, all of The finish options available in the Monopoint are available for the Yashar version.



PROJECT:

TYPE:

SPECIFIER:

DATE:

### Key Points (YSMH-SCO)

#### Housing

- Track accent head for use in Yashar Mains Track.
- Adjustable 360° degree rotation and 90° degree tilt.
- 40 finish options, including anodized, brass, painted + Custom/RAL#.
- Precision CNC machined aluminum in New Jersey.
- Track mounted with integral drivers in track adaptor fitting.

#### Source / Optics

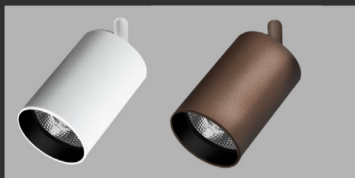
- 4 beam spreads - 20°, 28°, 40° and 60°
- Up to 1307 delivered lumens.
- <2 MacAdams Ellipses (<2 SDCM) for fixed white.
- 2400K, 2700K, 3000K, 3500K, 4000K, Ambient Dim™ in 3 CCT ranges: 2700K-2200K, 3000K-1900K, & 3000-2200K RGBWW: 1800K-6500K
- 90+ CRI, 60+ R9 Standard, 95+ CRI, 90+ R9 available with Ambient Dim™ option
- Supports CA Tilte 24 Requirements to JA8 in most configurations.
- Lifetime: L87B3>55,000 hours at 40°C Ambient

#### Driver And Control

- 120 volt.
- 0-10 volt, phase, or DALI-2. DALI-2 control enables individual control of each fixture.
- For track mount heads, 0-10 volt dimming control provides single zone of dimming control on 120 volt (2 or 3 circuit track) as the circuits are combined on the 0-10 volt control side. For two circuit applications ELV/Triac drivers are available to dim each circuit separately as there is a separate neutral for each circuit. We do not recommend using the ELV/Triac drivers in three circuit applications, as the three circuits share a common neutral. Refer to YSMT cutsheets for details on voltage and circuiting.

### Finish Options - See finish guide for full spectrum of colors

#### PXX- Powder Coat Paint examples



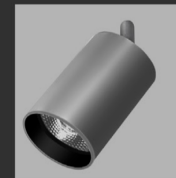
P14 White Paint P13 Moog Bronze

#### AXX- Anodize finish examples



A01 Black Anod. A32 Clear A20 Blue

#### AMXX- Matte Anodize



AM32 Clear

#### BXX- Brass finish



B05 Satin Brass

## Ordering Codes

PROJECT:

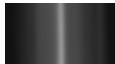

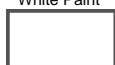

SPECIFIER:

DATE:

TYPE:

QUANTITY:

Ordering Code Example: YSMH-SCO-C14-30-28-TD3-AM01-97L

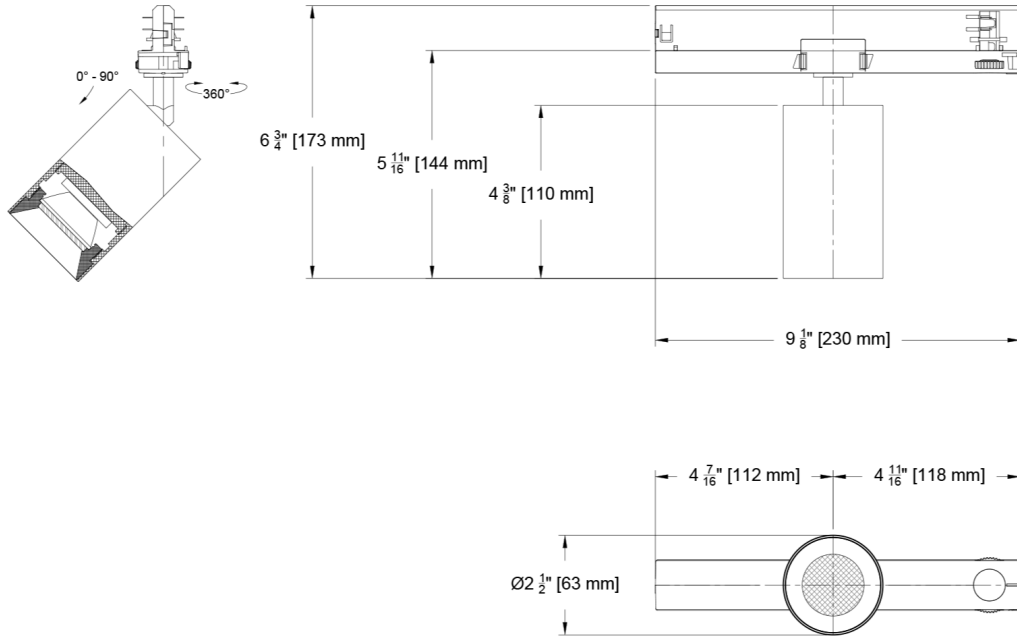
FIXTURE	SOURCE / WATTS	CCT	BEAM	DRIVER / CONTROL	HEAD FINISH	LENS ACCESSORIES
YSMH-SCO						
Yashar Mains Scope Original Track Head - YSMH-SCO	<b>Citizen</b>  C14 ●●● 14W 1292Lm* 90+CRI, 60+R9  C20 ●●● 21W 1422Lm** 90+CRI, 60+R9  <b>Tunable</b>  T9 90+CRI, 60+R9 <i>Tunable White</i>  T14 90+CRI, 60+R9 <i>Tunable White</i>  T20 ●●● 21W 1490Lm^ 90+CRI, 60+R9 <i>Tunable White</i>  <b>RGBWW</b>  <b>RGBWW</b> 13W 1346Lm 96+CRI, 93+R9 <i>*E4 Only</i>  <b>Ambient Dim™</b>  A14 ●●● 15W 851Lm* 95+CRI, 90+R9  A20 ●●● 21W 858Lm 95+CRI, 90+R9  ●●● Supports CA Title 24 compliance to JA8 requirements.  *Based on 28" Beam	24 2400K  27 2700K  30 3000K  35 3500K  40 4000K  <b>Tunable</b>  TW1840 1800-4000K Tunable White w/ TD2 & TD4  TW2765 2700-6500K Tunable White w/ TD2 & TD4  <b>RGBWW</b>  R1865 1800-6500K RGBWW Dynamic Color Changing *TD4 Only  <b>Ambient Dim™</b>  2722 * 2700-2200K *A14 Only  3019 3000-1900K  3022 * 3000-2200K *A14 Only	20 Spot  28 Narrow Flood  40 Flood  60 Wide Flood	TD1 0-10V 2.0%, (120-277V) linear  TD2 DALI-2 1.0%, (120-277V) linear  TD3 ELV/Triac 5.0%, (120-120V) linear  TD4^ DMX 0.1%, UNV (120-277V) Universal DMX Driver/Controller RGBWW-DMX ^ INCLUDES DMX/RDM COMPATIBLE DRIVER WITH BUILT-IN DECODER - CONTROLLER BY OTHERS	AM01 Black Matte Anodize^    AMXX Specialty Matte Anodize Color^  AM1-AM36  A32 Clear Anodize^    AXX Specialty Anodize Color^  A1-A36  W White Paint    PXX Specialty Paint Color*  P01-P15  B05 Satin Brass^    BXX Brass Finishes^  B01-B07  Note: Track adaptor furnished in White with W finish head. Other finishes furnished with a black track adaptor unless otherwise specified. ^Stem comes in selected color  * See Finish Guide	<b>Reflector (lamp) Media</b>  91L Solite  97L Black Hexcel Louver  XXL Other reflector (lamp) media*  <div>LENS ACCESSORY VISUAL GUIDE LINK</div> <div>FINISH GUIDE LINK</div>

## Dimensions

### Yashar Mains Scope Track Head

Standard Mount | A14, C14, T9, T14

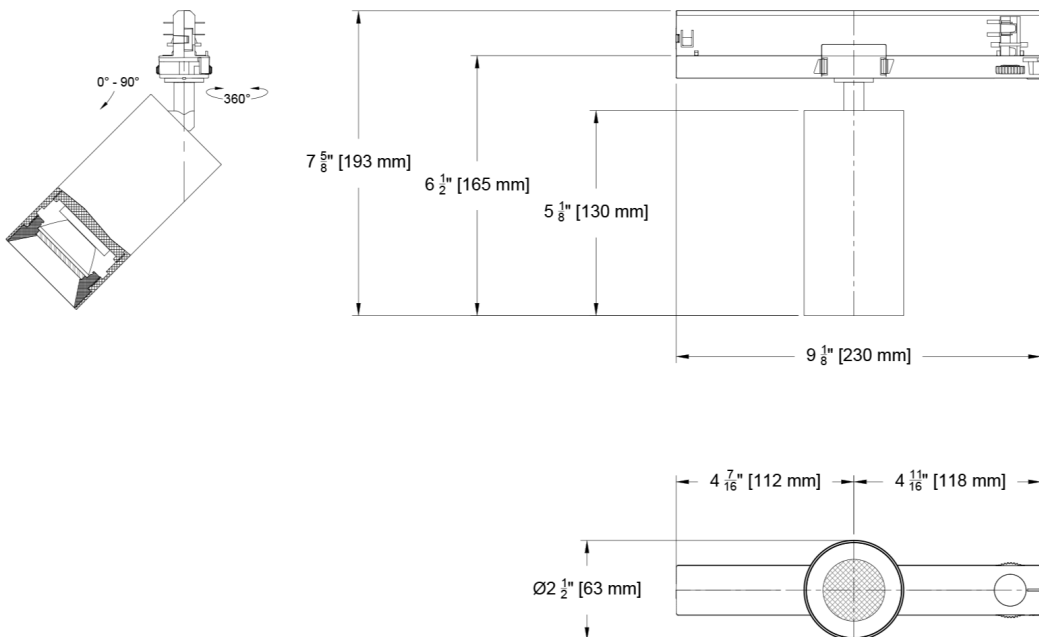
(YSMH-SCO-)



### Yashar Mains Scope Track Head

Standard Mount | A20, C20, T20

(YSMH-SCO-)

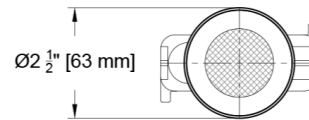
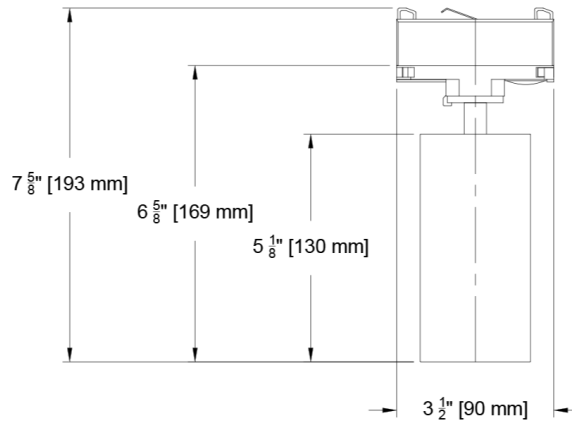
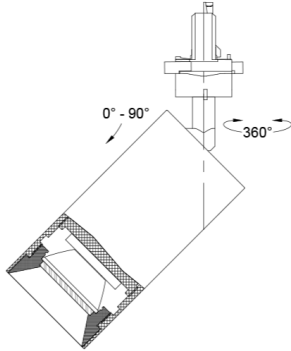


## Dimensions

Yashar Mains Scope Track Head

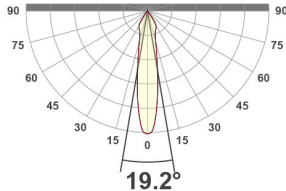
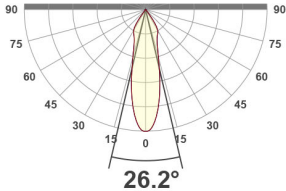
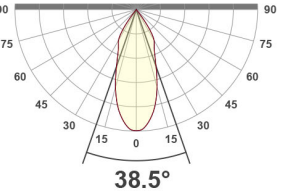
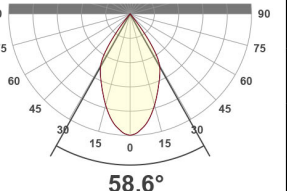
Standard Mount | RGBWW

(YSMH-SCO-)



# Photometric Table

All data below are delivered lumens based on goniometer measurements of production representative product. All lumen values can vary +/- 10% from LED manufacturer rated nominal flux. The following combinations do not meet California Title 24 efficacy requirements - Ambient Dim 15°.

CYLINDER Beamspreads		20°				28°				40°				60°			
	System watts (W)	Delivered Lumens (lm)	Lumens/ Watt	Peak CD	10% Field	Delivered Lumens (lm)	Lumens/ Watt	Peak CD	10% Field	Delivered Lumens (lm)	Lumens/ Watt	Peak CD	10% Field	Del. Lumens (lm)	Lms/ Watt	Peak CD	10% Field
Citizen C14	14	1290	92	4733	68°	1292	92	3395	71°	1255	90	2296	74°	1307	93	1702	78°
Ambient Dim A14	15	851	58	3509	66°	810	55	2246	71°	783	54	1519	73°	836	57	1105	77°
CCT Multiplier																	
CCT	Citizen	Beam angle				Beam angle				Beam angle				Beam angle			
2700	0.95																
3000	1.00																
3500	1.02																
4000	1.03																

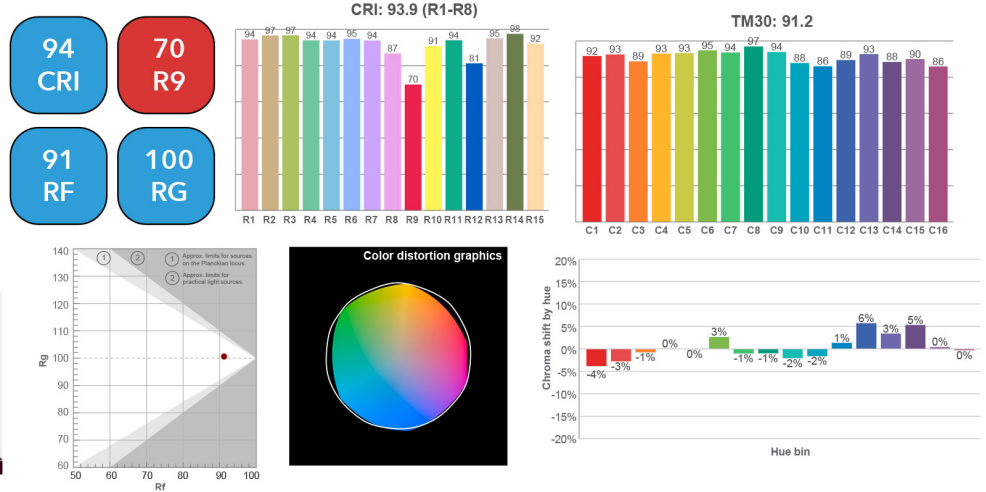
All Measurements are delivered lumens based on 3000K unless otherwise noted below. Ambient Dim measured at full output. ISO CD Plots based C14 Source.

## Color Data

All data below are delivered lumens. Color and flux information based on goniometer measurements of production representative product. All values can vary +/- 10% from LED manufacturer data range as listed on their datasheet.

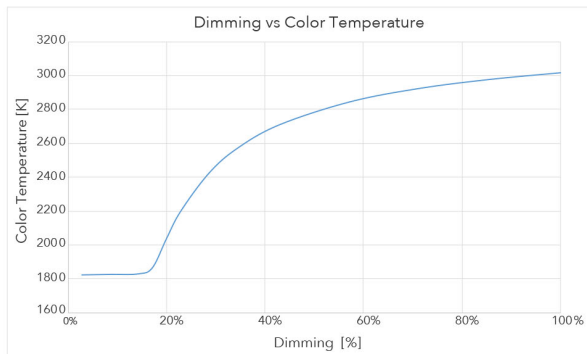
### Citizen Source C14

- <2 MacAdam Ellipse (<2 SDCM)
- 90+ CRI and RF
- 60+R9, Hue Bin 1

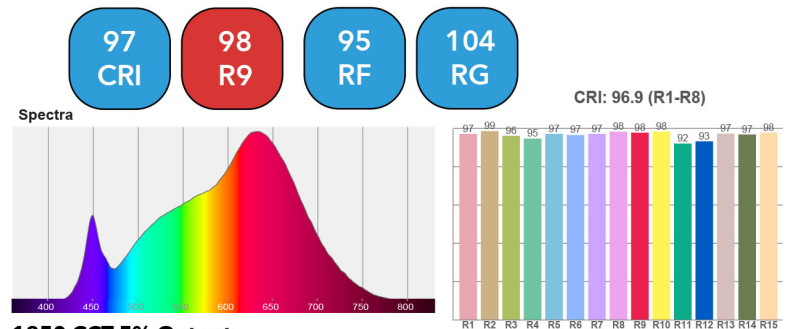


### Ambient Dim Source A14 (AD - 3000k to 1900k)

- <3 MacAdam Ellipse (<3 SDCM)
- 95+ CRI and RF
- 90+R9, Hue Bin 1
- Follows Black Body Locus through dimming range



#### 3000 CCT Full Output



#### 1850 CCT 5% Output

